

AARKOPA

SWA

TCH Kartela

ÇİZİLMEZ AKRİLİK RENKLER
ANTI-SCRATCH ACRYLIC COLORS

ENDÜSTRİYEL AKRİLİK RENKLER
INDUSTRIAL ACRYLIC RENKLER

arkopa.com.tr



ÇİZİLMEZ AKRİLİK RENKLER / ANTI-SCRATCH ACRYLIC COLORS

SAYFA PAGE	RENK	COLOR	KOD CODE
3	HG BEYAZ SNS	HG WHITE SNS	2321
4	HG KREM AKRİLİK SNS	HG CREAM SNS	2323
5	HG KAŞMİR SNS	HG CASHMERE SNS	2325
6	HG YEŞİL SNS	HG GREEN SNS	2324
7	HG SİYAH SNS	HG BLACK SNS	2326
8	HG METALİK GRİ SNS	HG METALİC GREY SNS	2327

Dijital kartelada ton farklılıkları olabilir.

Siparişinizi oluştururken fiili kartela üzerinden renk değerlendirmesi yapmanız önem arz etmektedir.

There may be color differences in digital color chart.
It is important to check the colors from physical color chart while ordering.

2321

Hg Beyaz Sns Hg White Sns

3

Çizilmez Akrilik Renkler / Anti-Scratch Acrylic Colors



2323

Hg Krem Akrilik Sns Hg Cream Sns

4

Çizilmez Akrilik Renkler / Anti-Scratch Acrylic Colors

ARKOPA



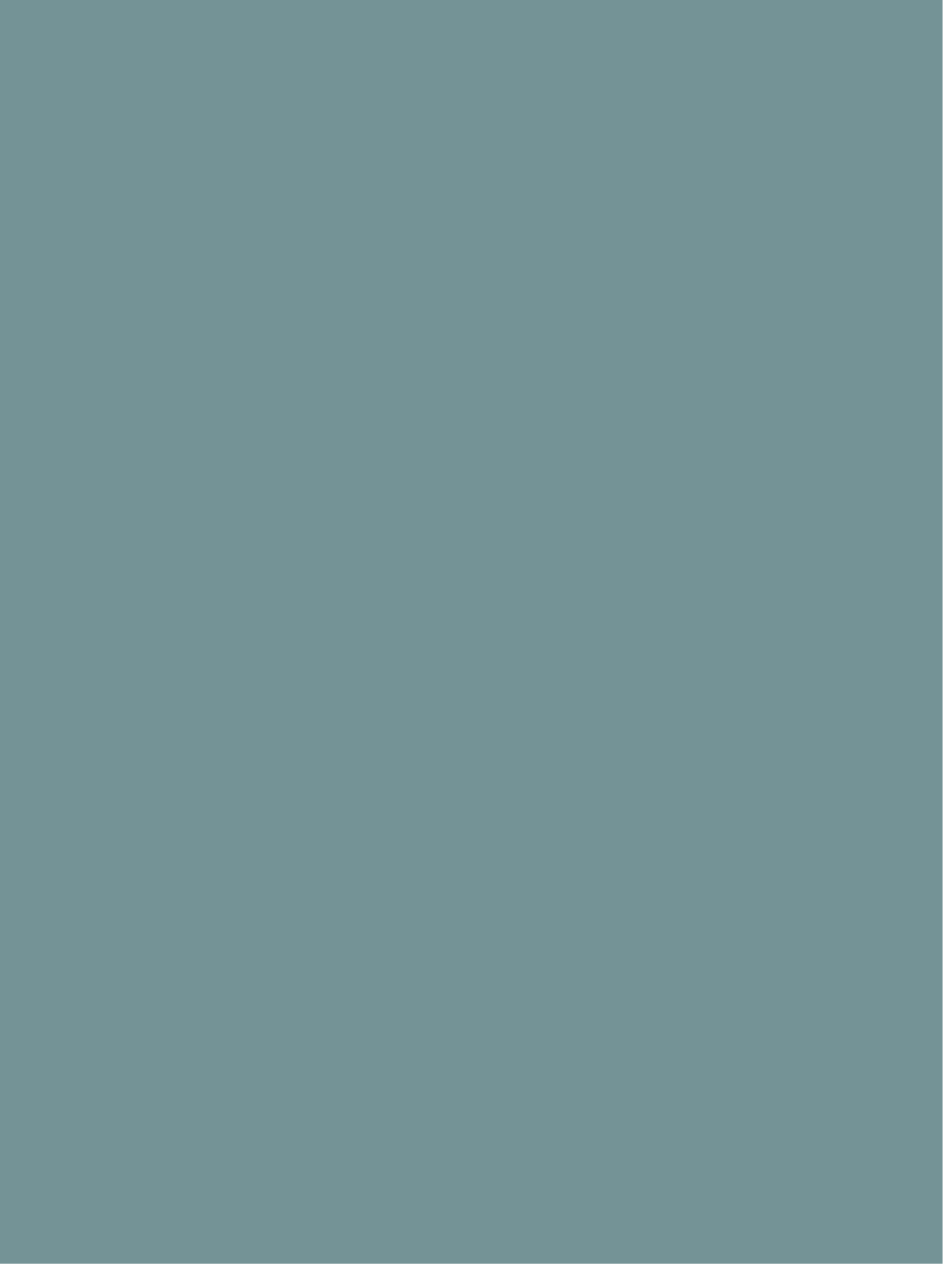
2325

Hg Kaşmir Sns Hg Cashmere Sns

5

Çizilmez Akrilik Renkler / Anti-Scratch Acrylic Colors

ARKOPA



2324

Hg Yeşil Sns Hg Green Sns

6

Çizilmez Akrylic Renkler / Anti-Scratch Acrylic Colors

ARKOPA

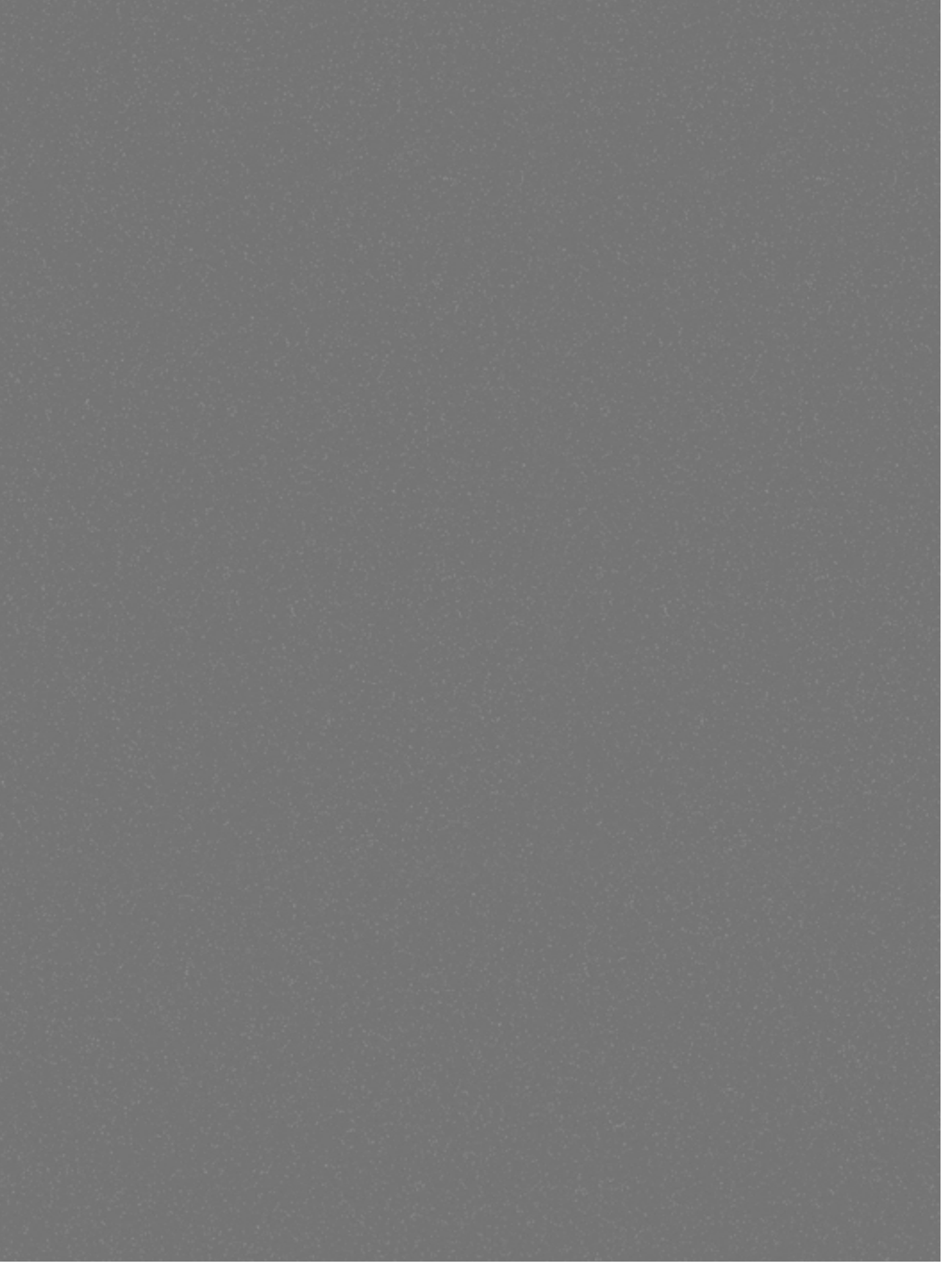
2326

Hg Siyah Sns Hg Siyah Sns

7

Çizilmez Akrlık Renkler / Anti-Scratch Acrylic Colors

ARKOPA



2327

Hg Metalik Gri Sns Hg Metallic Grey Sns

8

Çizilmez Akrilik Renkler / Anti-Scratch Acrylic Colors

ARKOPA

AARKOPA

SWA

TCH Kartela

ENDÜSTRİYEL AKRİLİK RENKLER
INDUSTRIAL ACRYLIC RENKLER

arkopa.com.tr



ENDÜSTRİYEL AKRİLİK RENKLER / INDUSTRIAL ACRYLIC RENKLER

SAYFA PAGE	RENK	COLOR	KOD CODE
11	HG PROJE BEYAZ	HG PROJECT WHITE	1643
12	SM PROJE BEYAZ	SM PROJECT WHITE	2141
13	HG BEYAZ	HG WHITE	1526
14	HG METALİK BEYAZ	HG METALLIC WHITE	2692
15	HG KREM	HG CREAM	1532
16	HG AÇIK GRİ	HG LIGHT GREY	1712
17	MAT AÇIK GRİ MAT	MATT LIGHT GREY	1713
18	HG KAŞMİR	HG CASHMERE	1537
19	HG CAPPUCINO	HG CAPPUCCINO	1531
20	HG BORDO	HG BORDEAUX	1549
21	HG MÜRDÜM	HG DAMSON	1548
22	HG METALİK GRİ	HG METALLIC GREY	1334
23	HG ANTRASİT	HG ANTHRACITE	1565
24	HG SİYAH	HG BLACK	1256

Dijital kartelada ton farklılıkları olabilir.

Siparişinizi oluştururken fiili kartela üzerinden renk değerlendirmesi yapmanız önem arz etmektedir.

There may be color differences in digital color chart.
It is important to check the colors from physical color chart while ordering.

1643

Hg Proje Beyaz Hg Project White

Endüstriyel Akriik Renkler / Industrial Acrylic Renkler



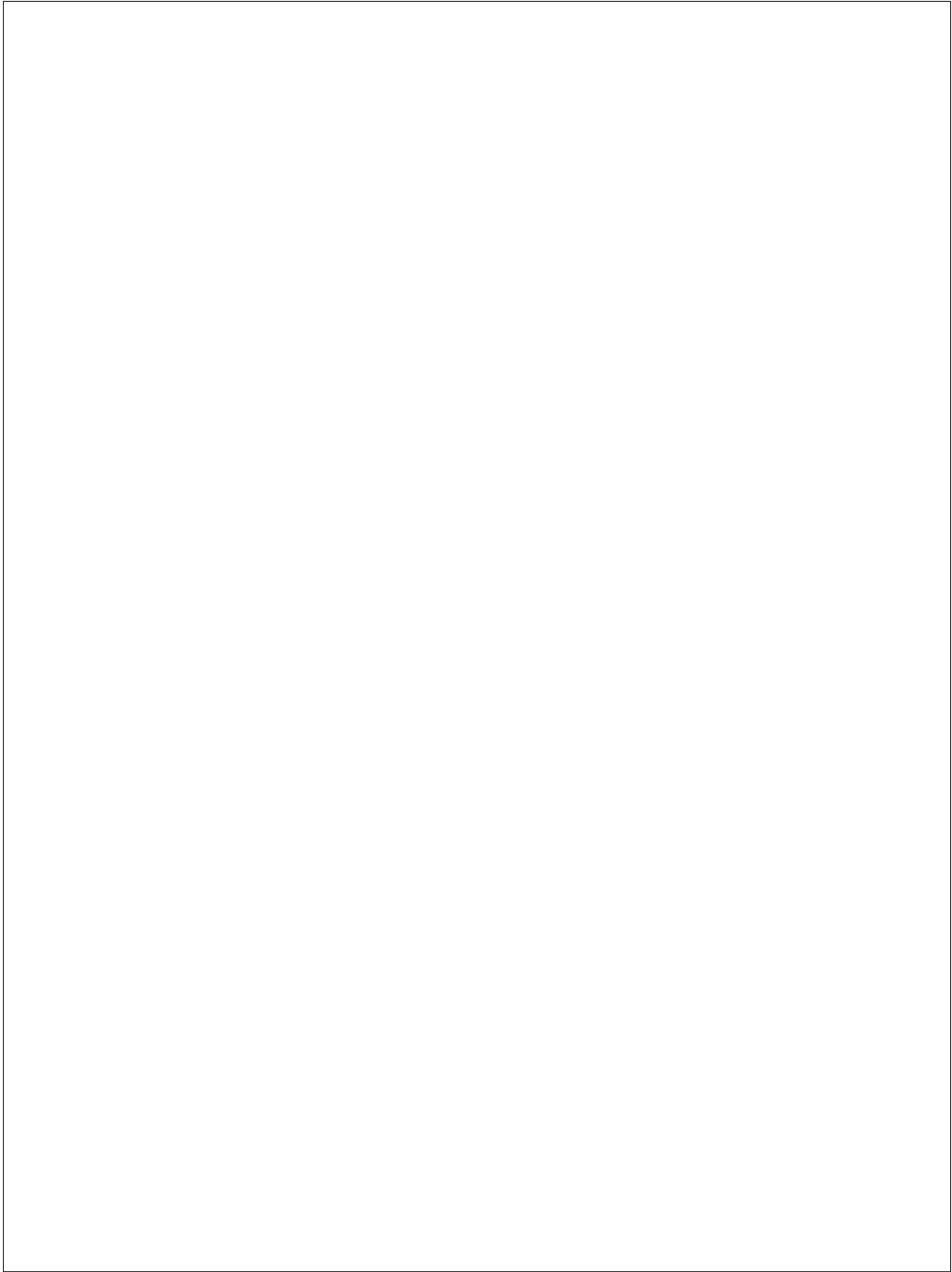
2141

Sm Proje Beyaz Sm Project White

12

Endustriyel Akrilik Renkler / Industrial Acrylic Renkler





1526

Hg Beyaz Hg White

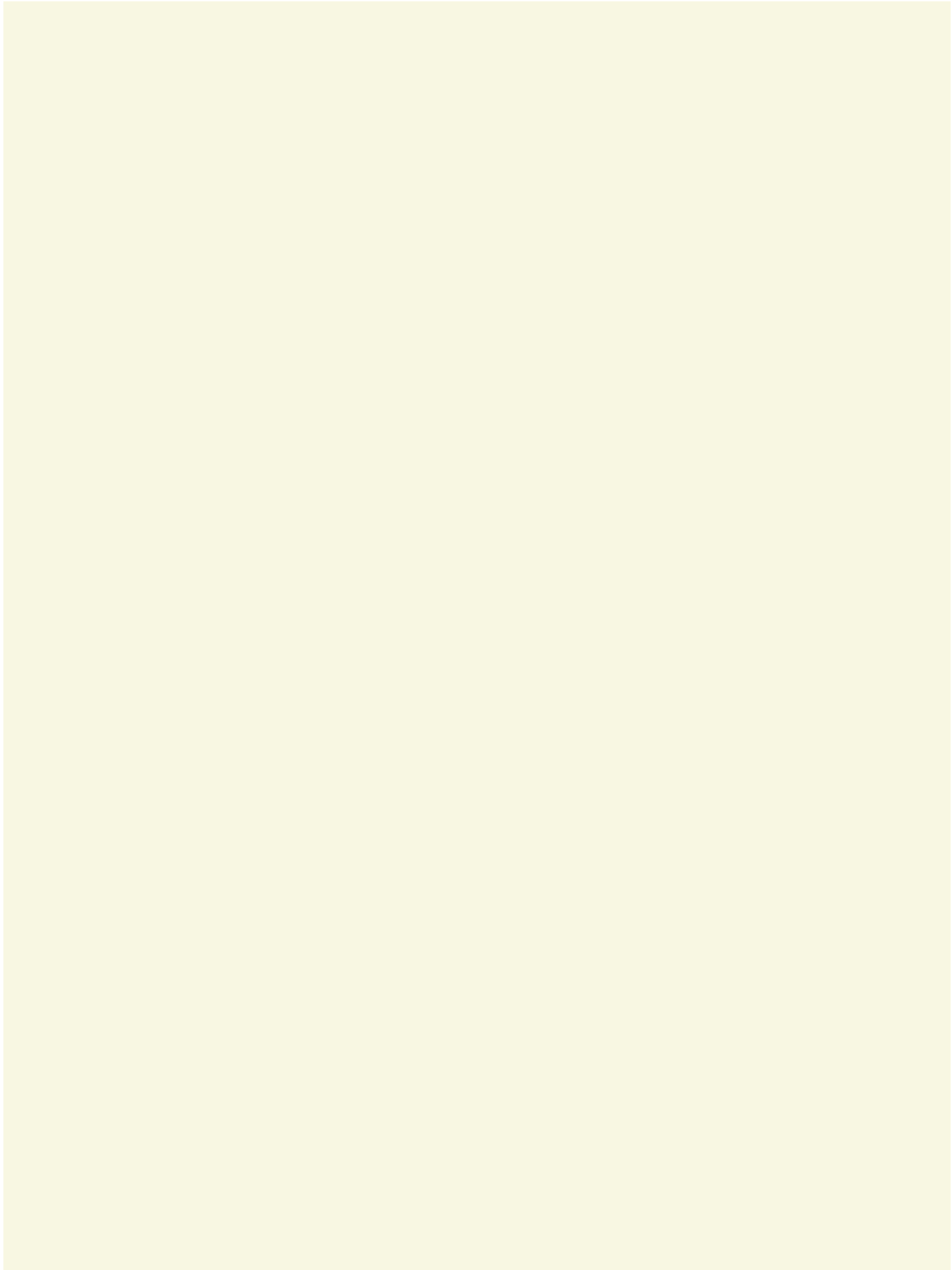
13

Endüstriyel Akrilik Renkler / Industrial Acrylic Renkler



2692

Hg Metalik Beyaz Hg Metallic White



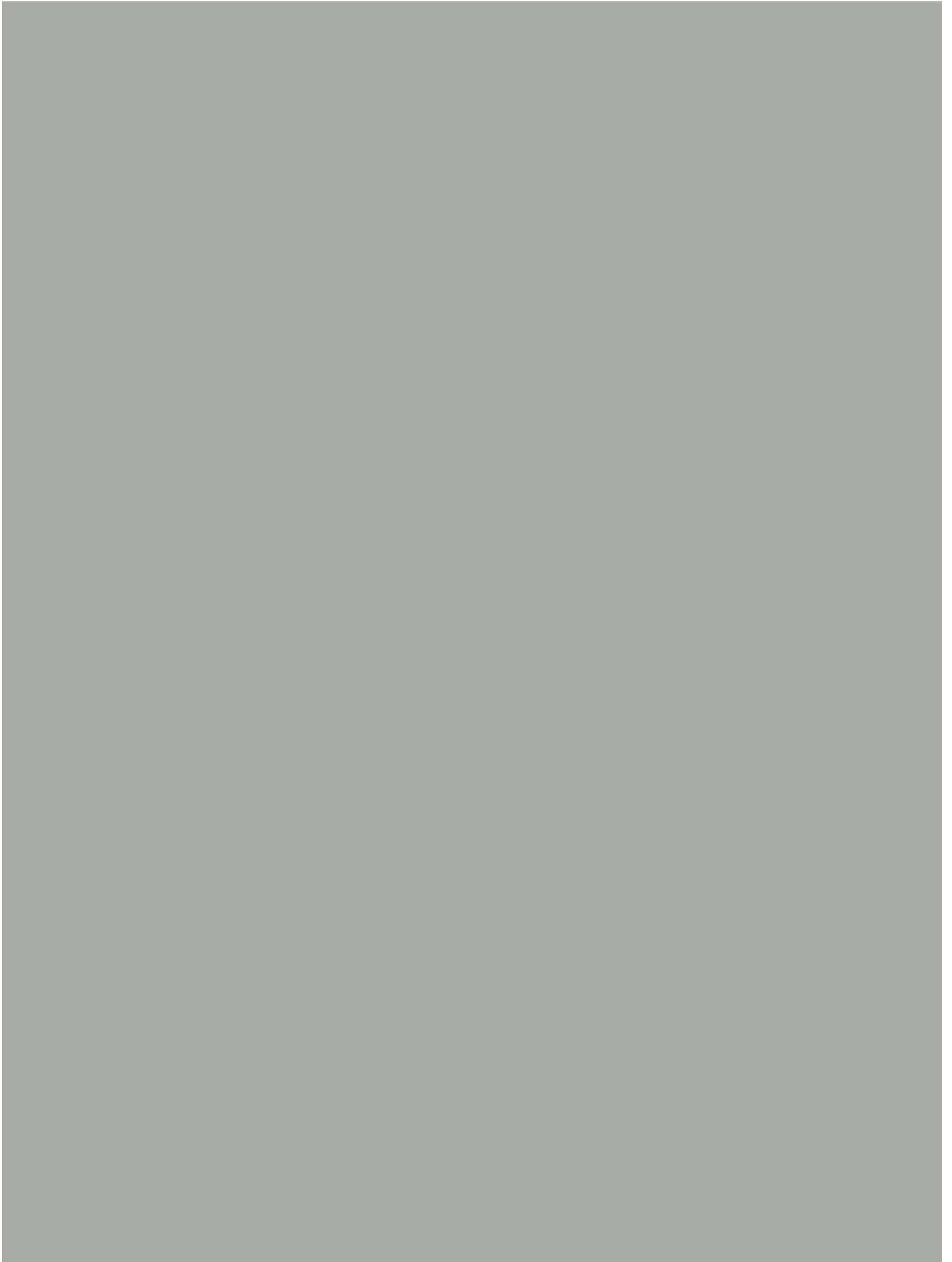
1532

Hg Krem Hg Cream

15

Endüstriyel Akriik Renkler / Industrial Acrylic Renkler





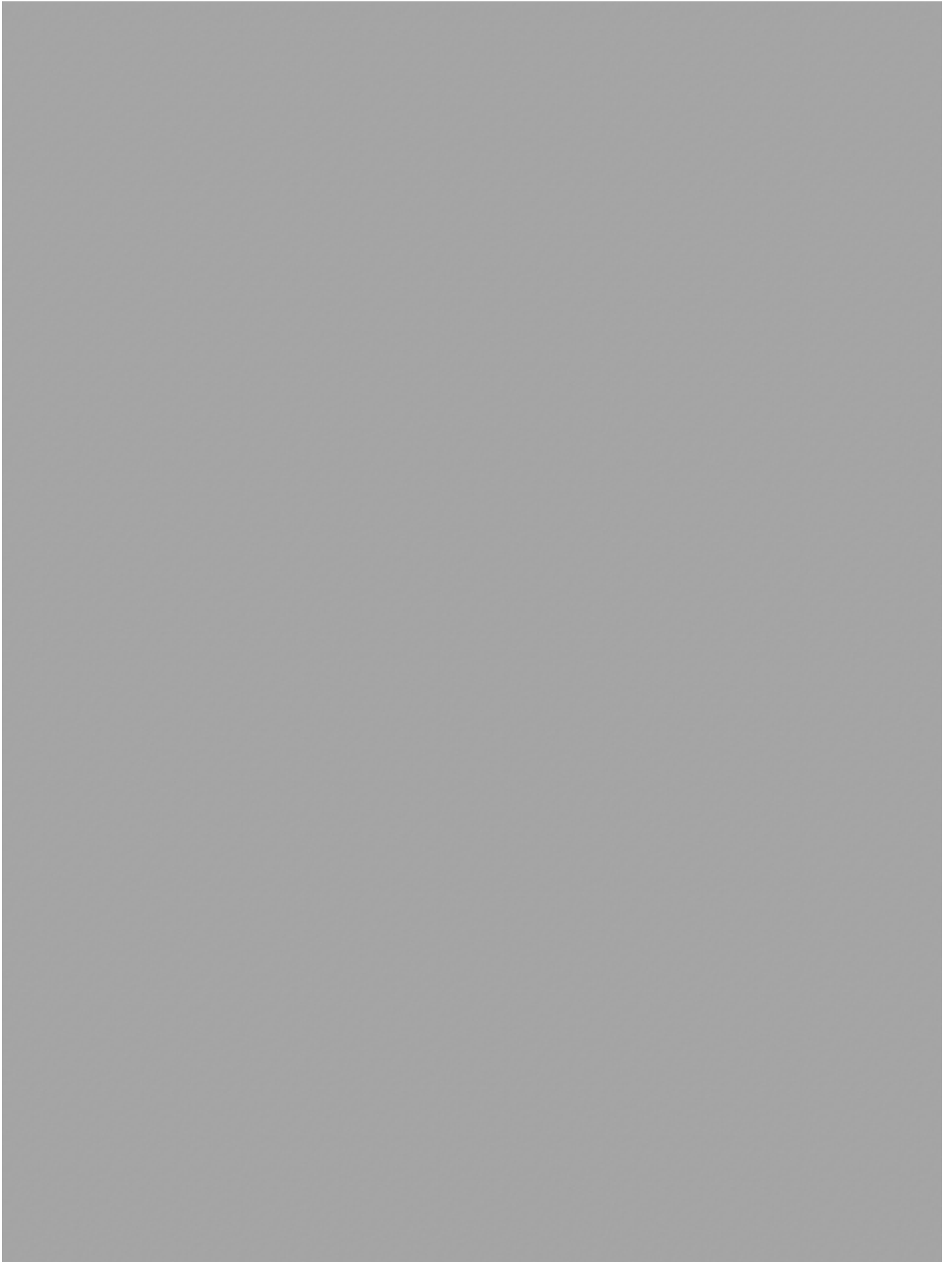
1712

Hg Açık Gri Hg Light Grey

16

Endüstriyel Akriik Renkler / Industrial Acrylic Renkler





1713

Mat Açık Gri Matt Light Grey

17

Endüstriyel Akrilik Renkler / Industrial Acrylic Renkler





1537

Hg Kaşmir Hg Cashmere

18

Endüstriyel Akrilik Renkler / Industrial Acrylic Renkler

ARKOPA



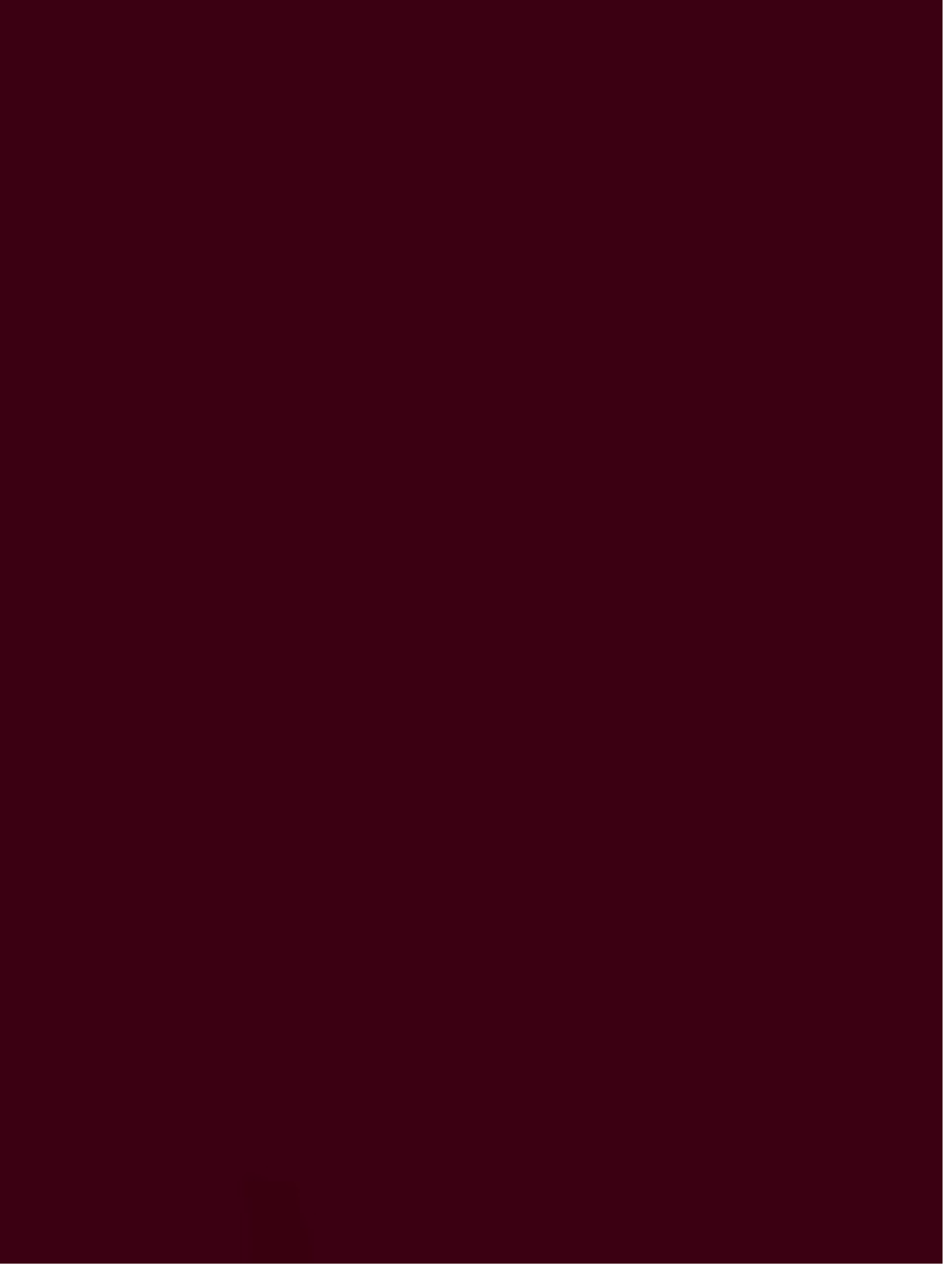
1531

Hg Cappuccino Hg Cappuccino

19

Endustriyel Akrilik Renkler / Industrial Acrylic Renkler





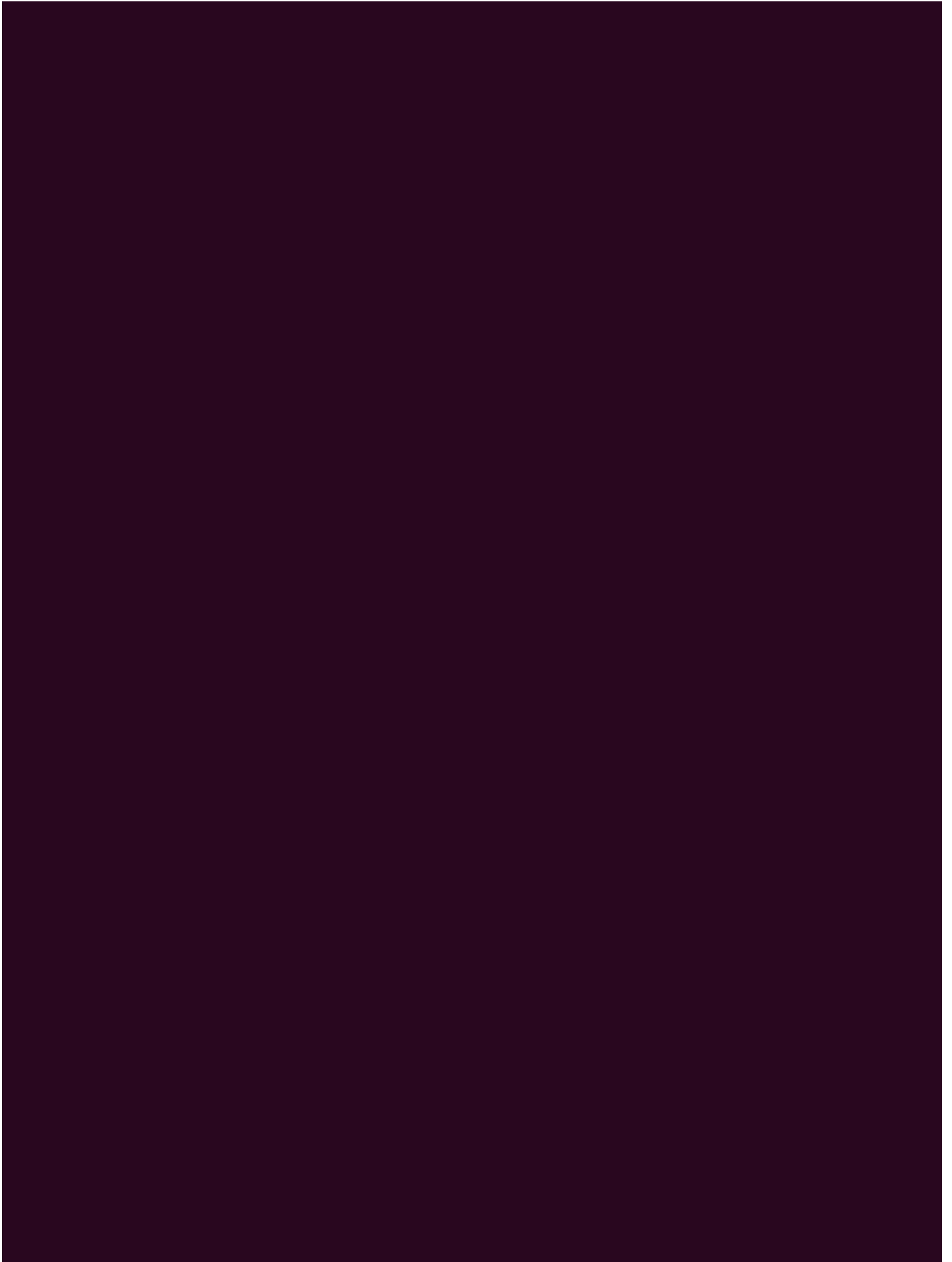
1549

Hg Bordo Hg Bordeaux

20

Endüstriyel Akriik Renkler / Industrial Acrylic Renkler





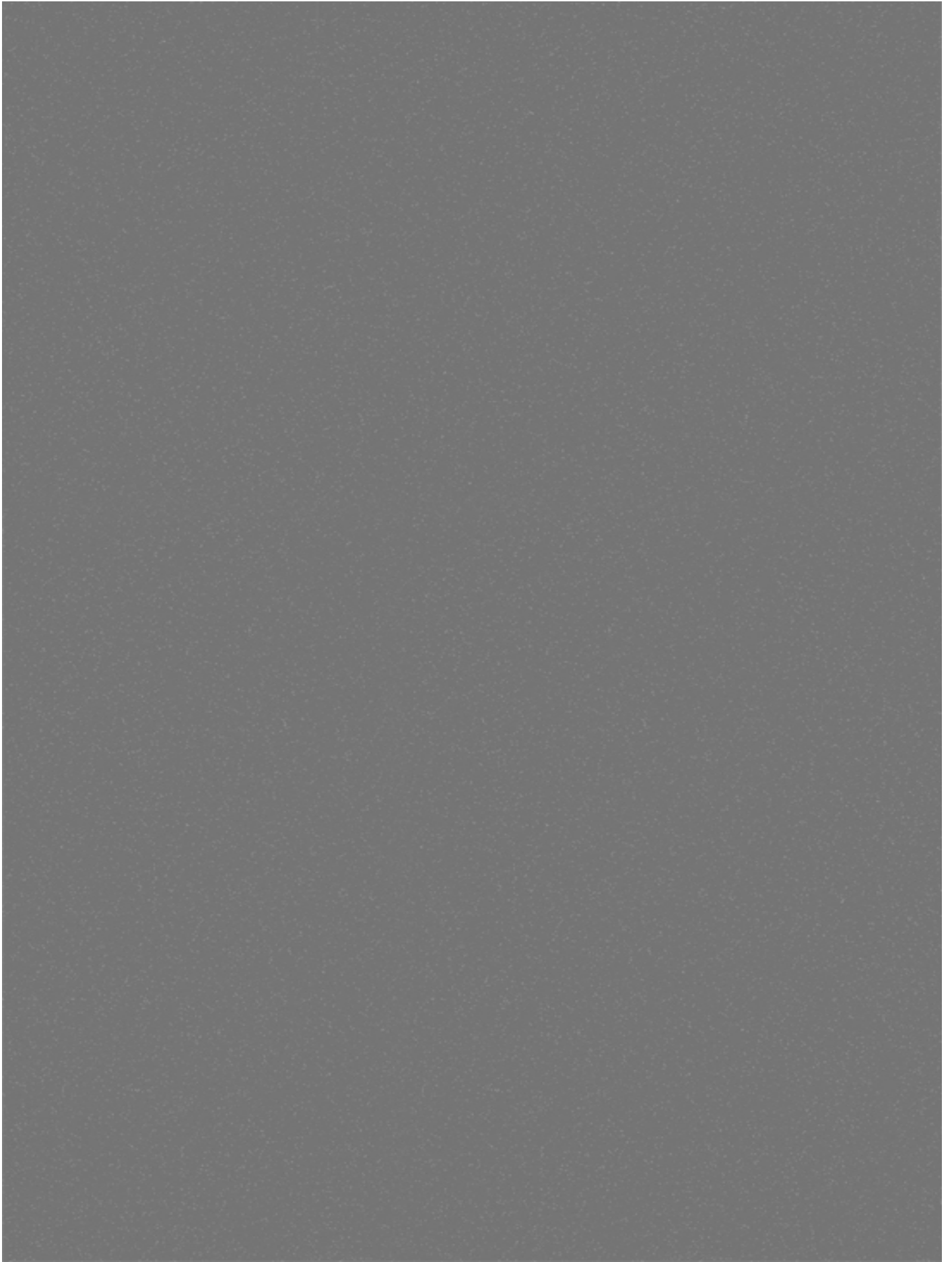
1548

Hg Mürdüm Hg Damson

21

Endüstriyel Akriik Renkler / Industrial Acrylic Renkler

ARKOPA



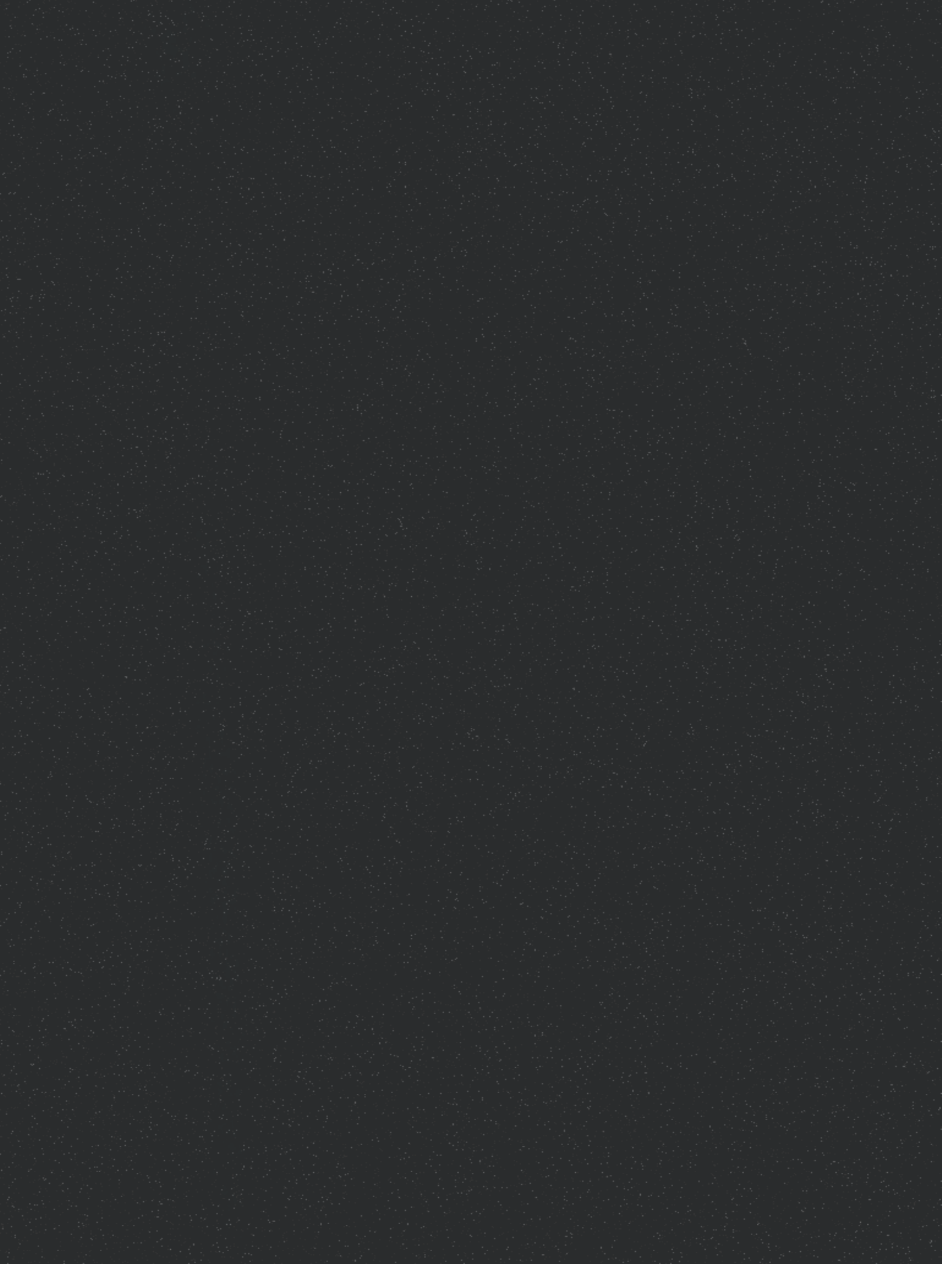
1334

Hg Metalik Gri Hg Metallic Grey

22

Endustriyel Akriik Renkler / Industrial Acrylic Renkler





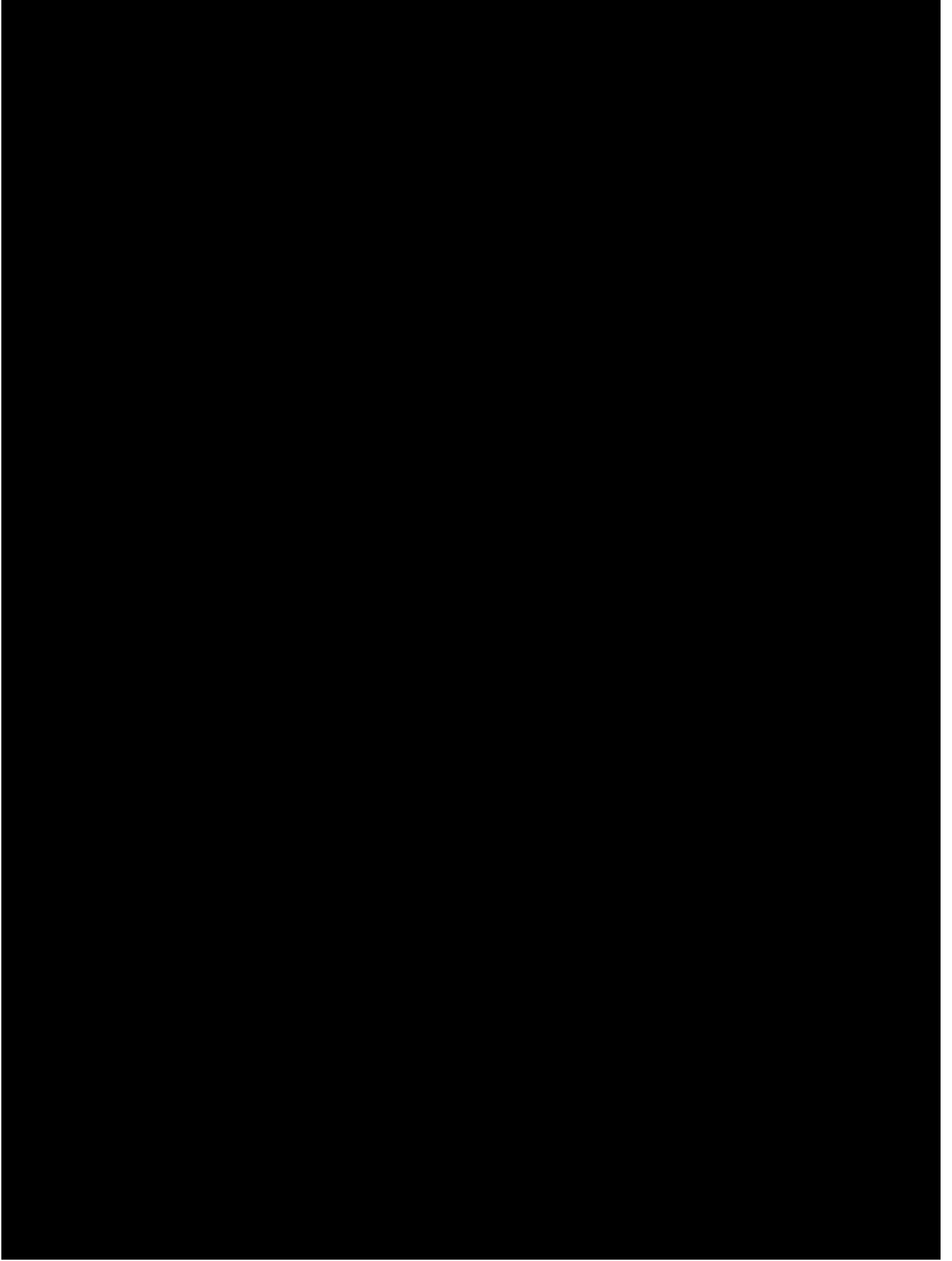
1565

Hg Antrasit Hg Anthracite

23

Endustriyel Akrilik Renkler / Industrial Acrylic Renkler





1256

Hg Siyah Hg Black

24

Endustriyel Akriik Renkler / Industrial Acrylic Renkler



